



SPECIAL AGENTS HOUSEBOATS

Danny Varona-Marin & Linda M. Bagley
Real Estate Brokers

☎ 206 979 6350
✉ Danny@SpecialAgentsRealty.com



End of Dock Floating Home

Be mesmerized by an absolutely spectacular end of dock location, where Hollywood stars have stayed, and every day feels like a vacation. Rain or shine, you'll enjoy all Lake Union has to offer, with stunning westward views, from the Seattle skyline to Gasworks Park. Available from Nov 1 until the end of April 2020 (negotiable). Includes water, HOA's, garbage, sewer with first-month rent, \$2,500 deposit, \$250 cleaning fee, \$500 refundable pet deposit. Partially furnished and pet subject to restrictions.

\$5000/mo

**2235 Fairview Ave E #16
Seattle WA 98102**



- ⚓ End of Dock—swim from your deck
- ⚓ Unobstructed panoramic views
- ⚓ 2 Spacious decks—access to lake
- ⚓ Master Bedroom plus 2 sleeping areas
- ⚓ 2 bathrooms—1 on each floor
- ⚓ Vaulted ceilings—lots of windows
- ⚓ Moorage for small boat (with approval)
- ⚓ Off-street paved parking lot - first come, first served
- ⚓ Partially furnished
- ⚓ Includes: water, sewer garbage, & HOA's
- ⚓ Approximately 1464 square feet



- ✓ Live the Sleepless in Seattle lifestyle!
- ✓ Walk to waterfront every day!
- ✓ Quick access to downtown Seattle!
- ✓ Kayak at a moments notice!
- ✓ Watch Lake Union Living every day!
- ✓ Feel like you are on vacation every day!

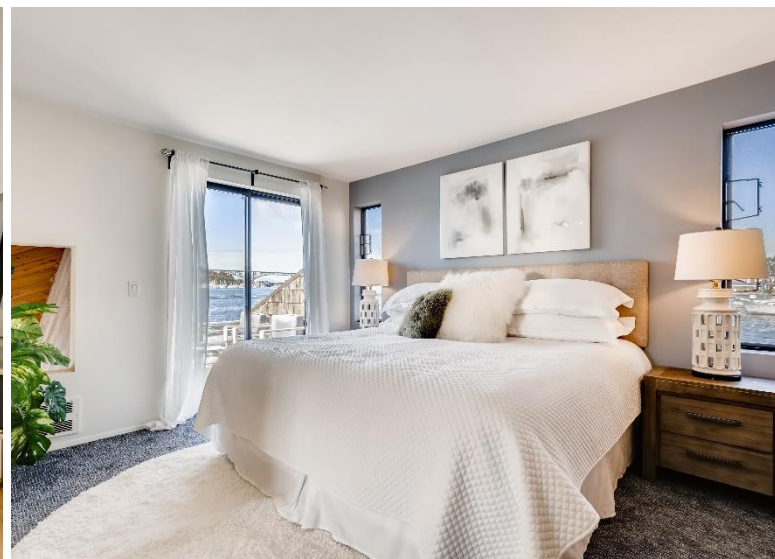


www.bit.ly/34DI2dv



SpecialAgentsHouseboats.com

Waterfront you can put your toes in!™



SPECIAL AGENTS
REALTY

Waterfront you can put your toes in!™

Information presented believed to be accurate. Prospective tenant to verify all information